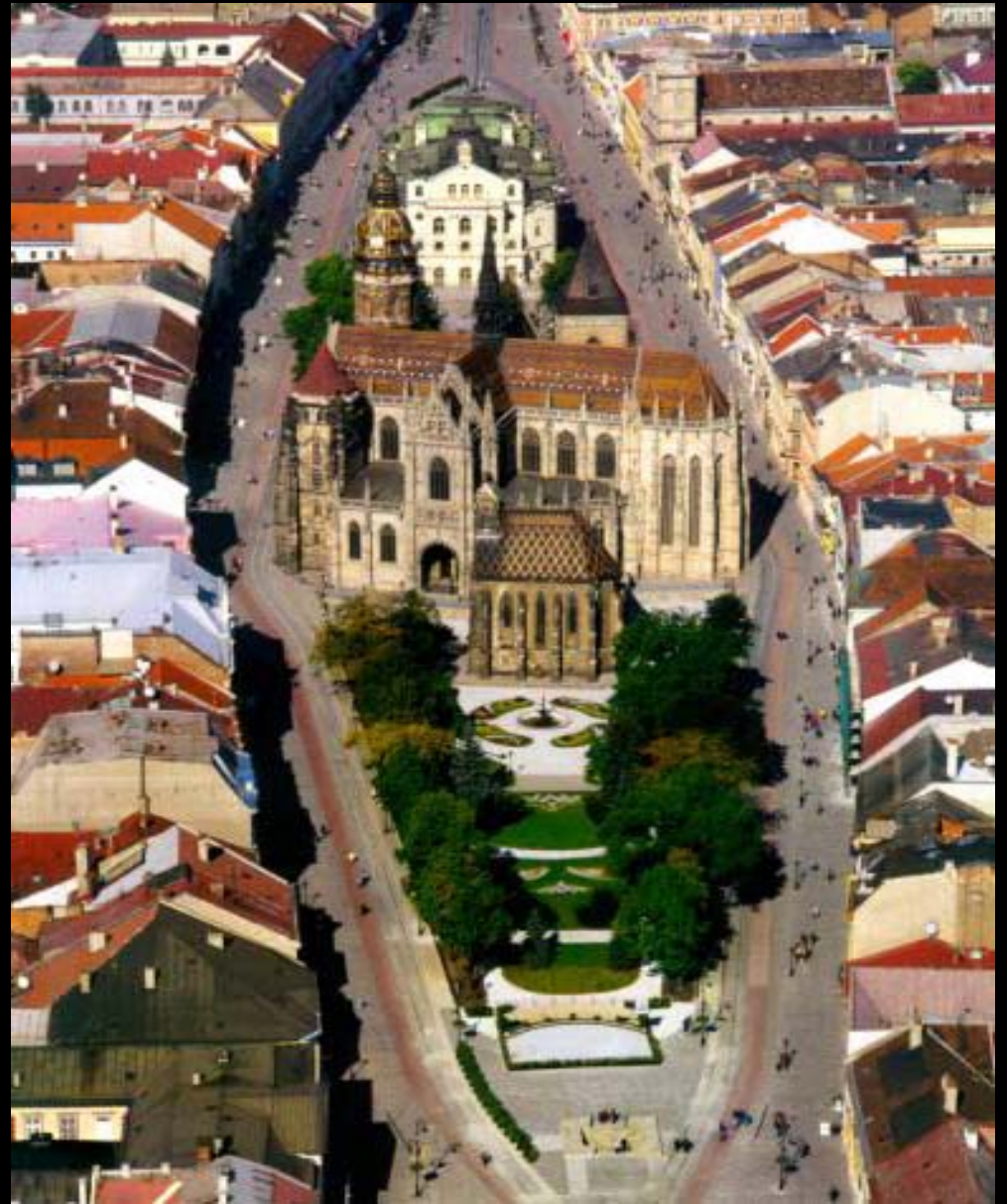


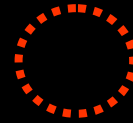
# URBAN & ENVIROMENT

KOSICE  
SLOVAKIA





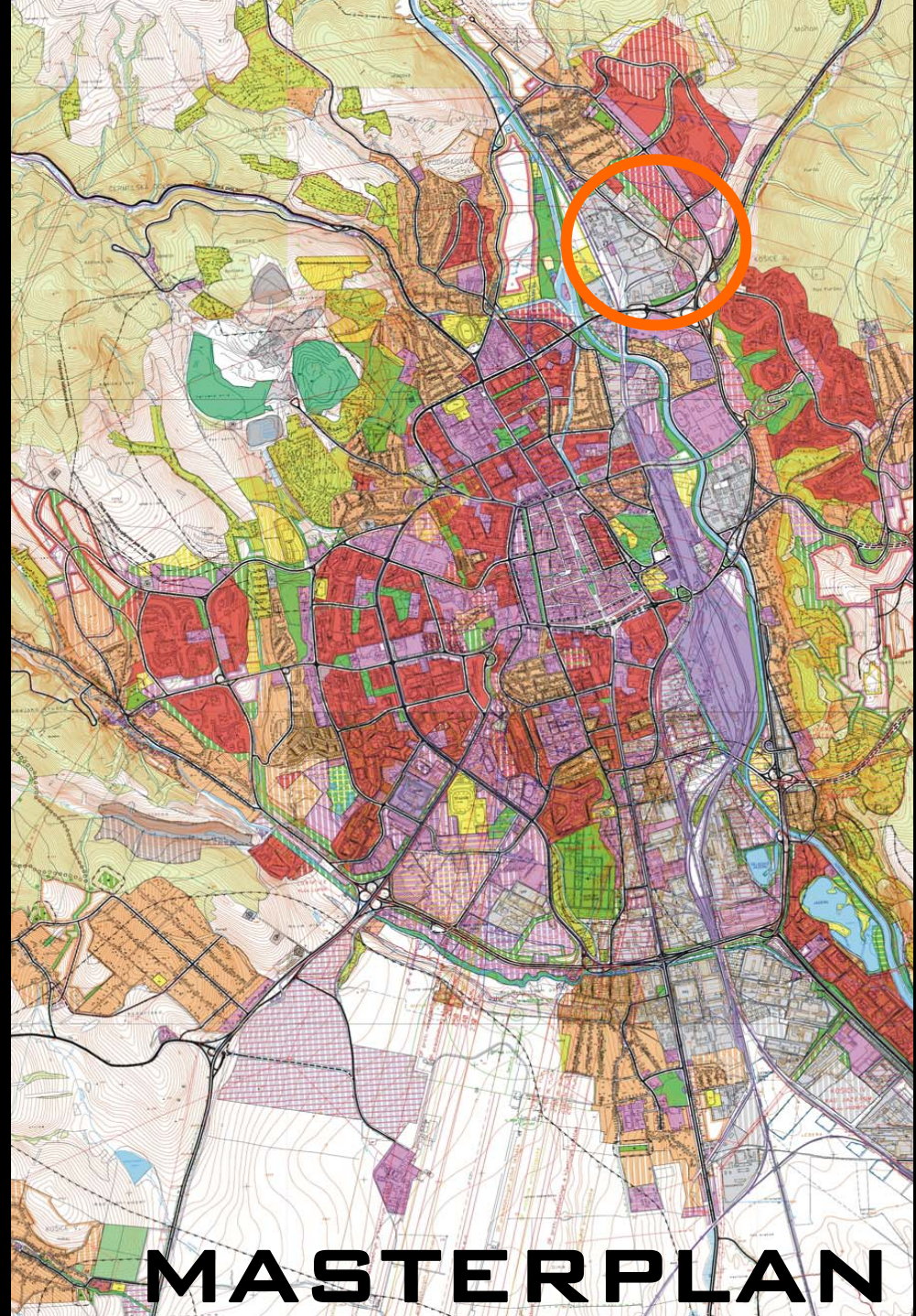
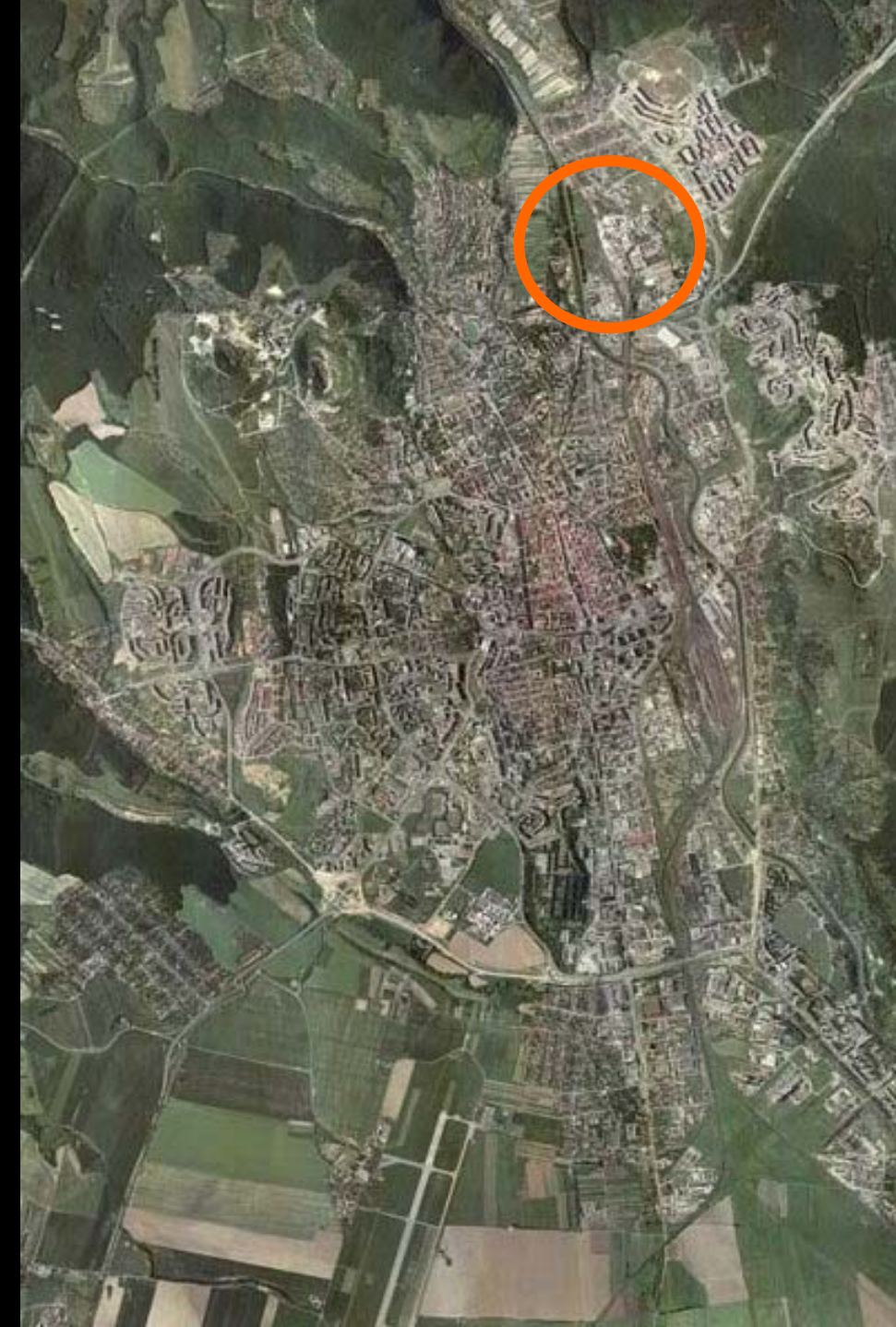
THE BIGGEST  
SETTLEMENTS



CENTRE

**22 INDEPENDENT DISTRICTS**





**MASTERPLAN**



# WHAT IS INTEGRATED APPROACH?

INITIATIVE – MUST BE BASED ON PARTNERSHIP

1. PARTICIPATION OF CITIZENS
2. PUBLIC PARTNERSHIP
3. PUBLIC - PRIVATE PARTNERSHIP

MULTIDISCIPLINARY TEAM:

CLEARLY DEFINED MULTIDISCIPLINARY TEAM IS NECESSARY FOR PROJECT CREDIBILITY AND CAN HELP ITS IMPLEMENTATION

# HOW USE INTEGRATED APPROACH?

1. EVALUATION OF EXISTING STATE
2. ANALYSIS OF REQUIREMENTS
3. ANALYSIS OF POSSIBILITIES
4. DEFINITION AND NEGOTIATION OF AIMS TO BE ACHIEVED AND VARIOUS POSSIBLE SCENARIOS
5. EVALUATION OF IMPACT
6. ACTION PLAN
7. EVALUATION

# SUSTAINABLE COMMUNITIES (BRISTOL ACCORD)

## DEFINITION:

SUSTAINABLE COMMUNITY IS A PLACE WHERE  
PEOPLE WANT TO LIVE NOW AND IN FUTURE

- (1) ACTIVE, INCLUSIVE AND SAFE
- (2) WELL RUN
- (3) WELL CONNECTED
- (4) WELL SERVICED
- (5) ENVIRONMENT FRIENDLY
- (6) PROSPEROUS
- (7) WELL DESIGNED AND BUILT
- (8) FAIR FOR EVERYONE





FAHANOYCE  
HABITATION AREA

POLYFUNCTIONAL  
PROJECTED AREA

BROWNFIELD AREA

MAGNESITE WORKS

PROJECTED  
RECREATION AREA

WICK  
RECREATION AREA



**CHANGE OF MASTERPLAN  
IN ORDER TO BETTER USE  
BROWNFIELD AREA  
AND ITS SURROUNDINGS**

**IDEA + INVESTOR = REALIZATION**



**ANALYSE**

**FIND**

**FINANCES**

**PREPARE**

**CHOOSE**

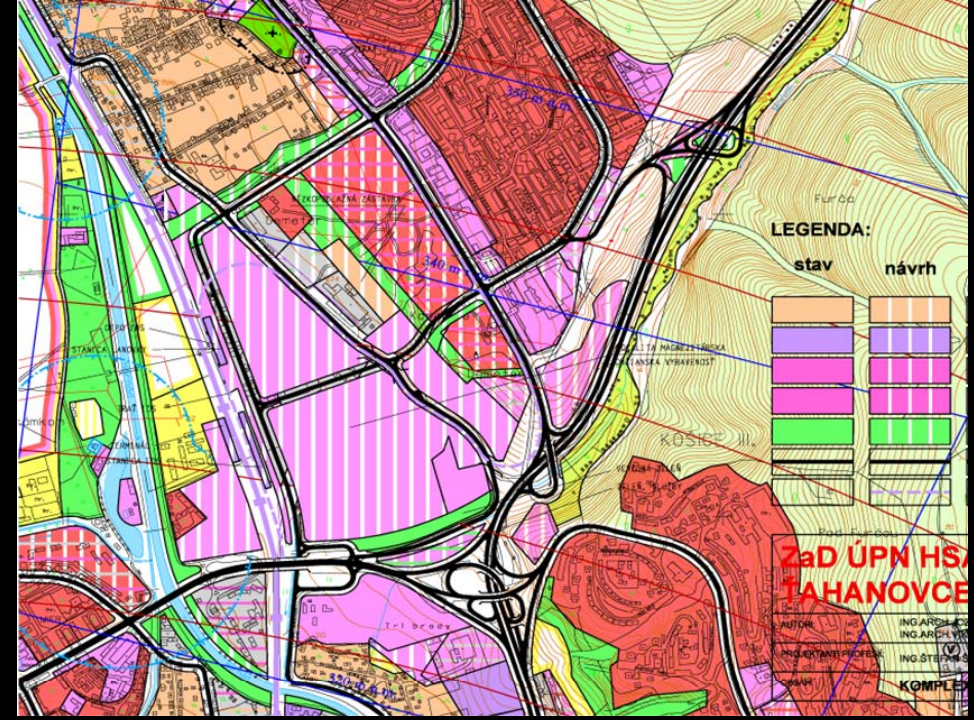
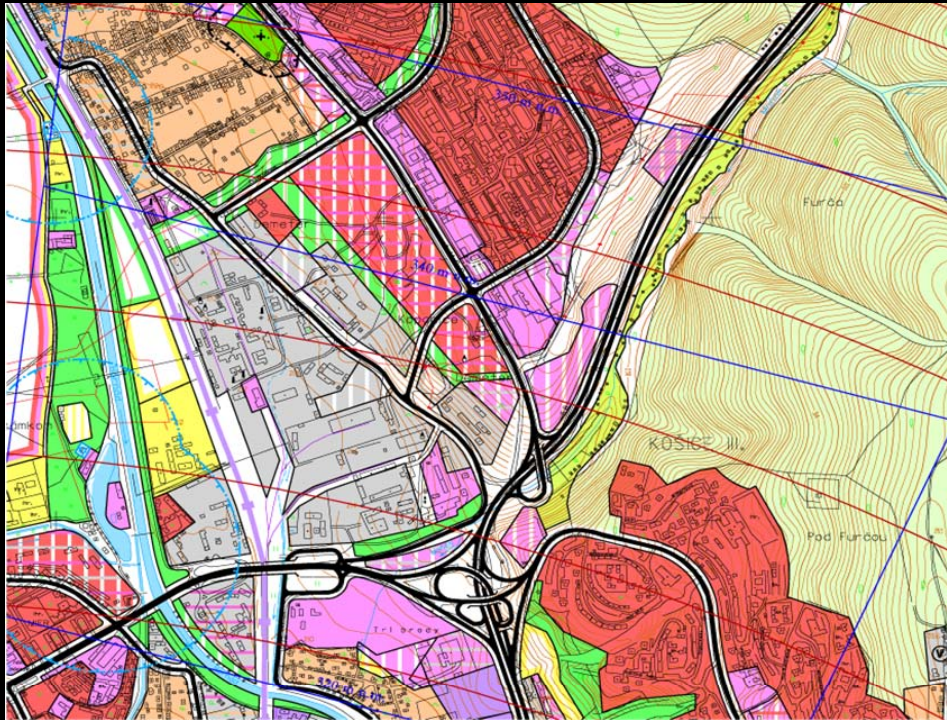
**TERM**

**RATIFY**

**DEAL**



# CHANGE OF MASTERPLAN IN ORDER TO BETTER USE BROWNFIELD AREA AND ITS SURROUNDINGS



-  AREAS OF PRODUCTION, STORAGE AND CONSTRUCTION FACILITIES
-  AREAS OF CITY AND ABOVE CITY CIVIC FACILITIES
-  RESIDENTIAL AREAS OF MULTI-STOREY BUILT-UP AREA
-  COMMON GREEN

IMPORTANT: **STABILITY**

(GENERAL STABILITY)

➔ 3 SIMPLE ASPECTS

- ASPECT 1: **HOME**
- ASPECT 2: **WORK**
- ASPECT 3: **RELAX**

**IDEAL:** ALL PARTS CLOSE TO CITIZEN  
(USER, SUBJECT)

**REALITY:** STABILITY IN A WIDER CONTENT



- URBANISM BECOMES AS A CONTINUATION OF IDEOLOGISED POLITICS
- THE VISION OF PROGRESS WAS CONNECTED WITH SETTLING IN THE PAST
- PRESENT WE BEGIN TO PERCEIVE URBAN COMPLEXES, SETTLEMENTS AS A CATEGORY OF ECOSYSTEMS WITH CHARACTERISTIC PARAMETERS OF STABILITY

**METAPHORICALLY SPEAKING WE CAN STATE THAT URBAN SYSTEM IS SOCIALLY STABLE WHEN IT IS ARCHITECTURALLY STRUCTURED.**

**ENVIROMENT:**

URBAN DEMOCRACY

(WITH HUMAN AND SOCIAL ECOLOGY)

# URBAN DEMOCRACY

(AS IMPACT TO ENVIROMENT)

- FREEDOM IN MOTION IN PHYSICAL SENSE, SIMPLE USE OF AMBIENT
- FEELING OF PHYSICAL AND MENTAL SECURITY
- ABSENCE OF THE FEELING OF ENDANGERMENT BY ATTRIBUTES OF THE ENVIRONMENT - SCALE, FORM, COLOUR, AGGRESSIVE ELEMENTS
- MINIMUM OF FORBIDDANCE, UNEQUIVOCALNESS OF SPATIAL STRUCTURE AND ARCHITECTONIC ELEMENTS MAKES THE COMMANDS AND FORBIDDANCE NEEDLESS
- GENERALLY POSITIVE IMPRESSION OF THE ENVIRONMENT, IT OFFERS ITS QUALITY, IT DOES NOT DISSOCIATED ITSELF FROM MAN
- POSSIBILITY TO DISCOVER SURPRISES AND "SECRETS"
- "THE LEADING ROLE OF COGNITARIATE SUBSTITUTED THE LEADING ROLE OF PROLETARIAT" ALSO IN URBANISTIC SCALE



THANK YOU FOR YOUR ATTENTION

WWW.KOSICE.SK

CITY ARCHITECTS OF KOSICE

TR. SNP 48/A  
04001 KOSICE  
SLOVAKIA

+421 55 6419 472  
+421 55 6419 464  
UHAMKE@KOSICE.SK