

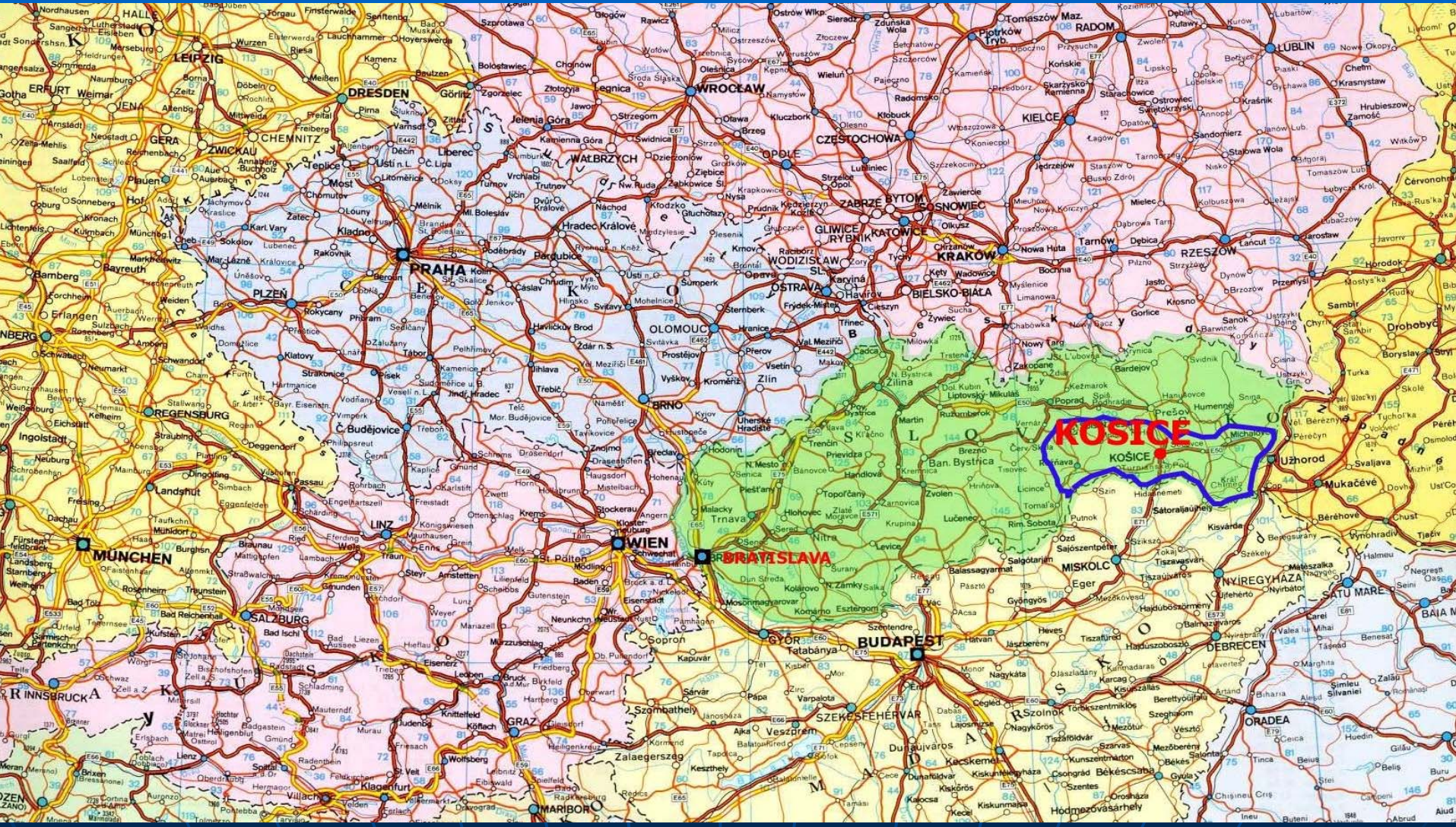


# Re T In A and Košice

- Kosice, Slovakia
- Magnesite street brownfield
  - Integrated Approach
  - Bristol Accord
  - Closer Partnership



# KOSICE REGION



# KOSICE

Kosice City

Regional Capital

Centre of Eastern Slovakia

Location

Mountains – N, W

Hornad River – N to S

Agricultural land - S,E

Area 243 sq. km surface

Population City 243k

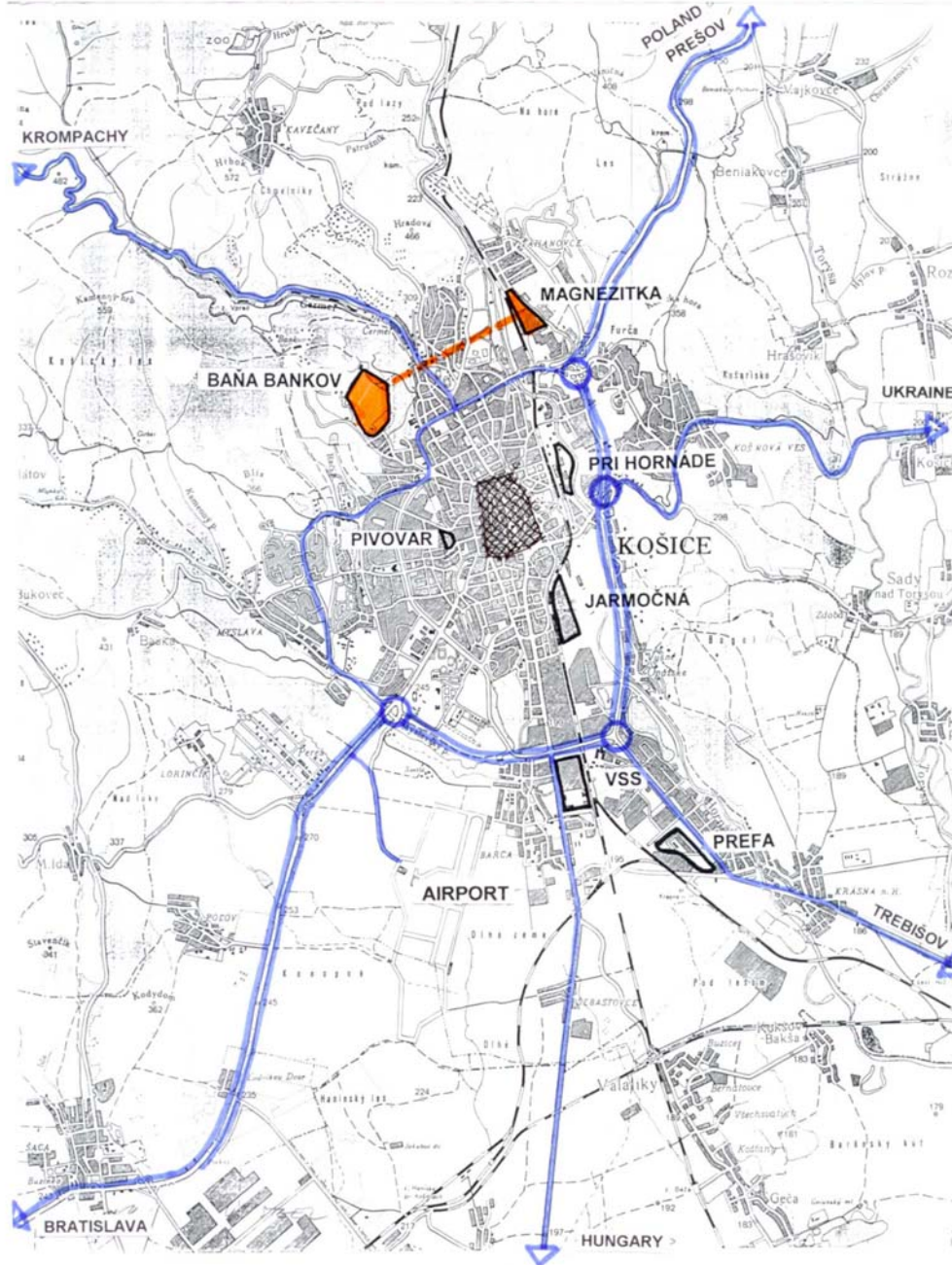
"Great" Kosice 350k

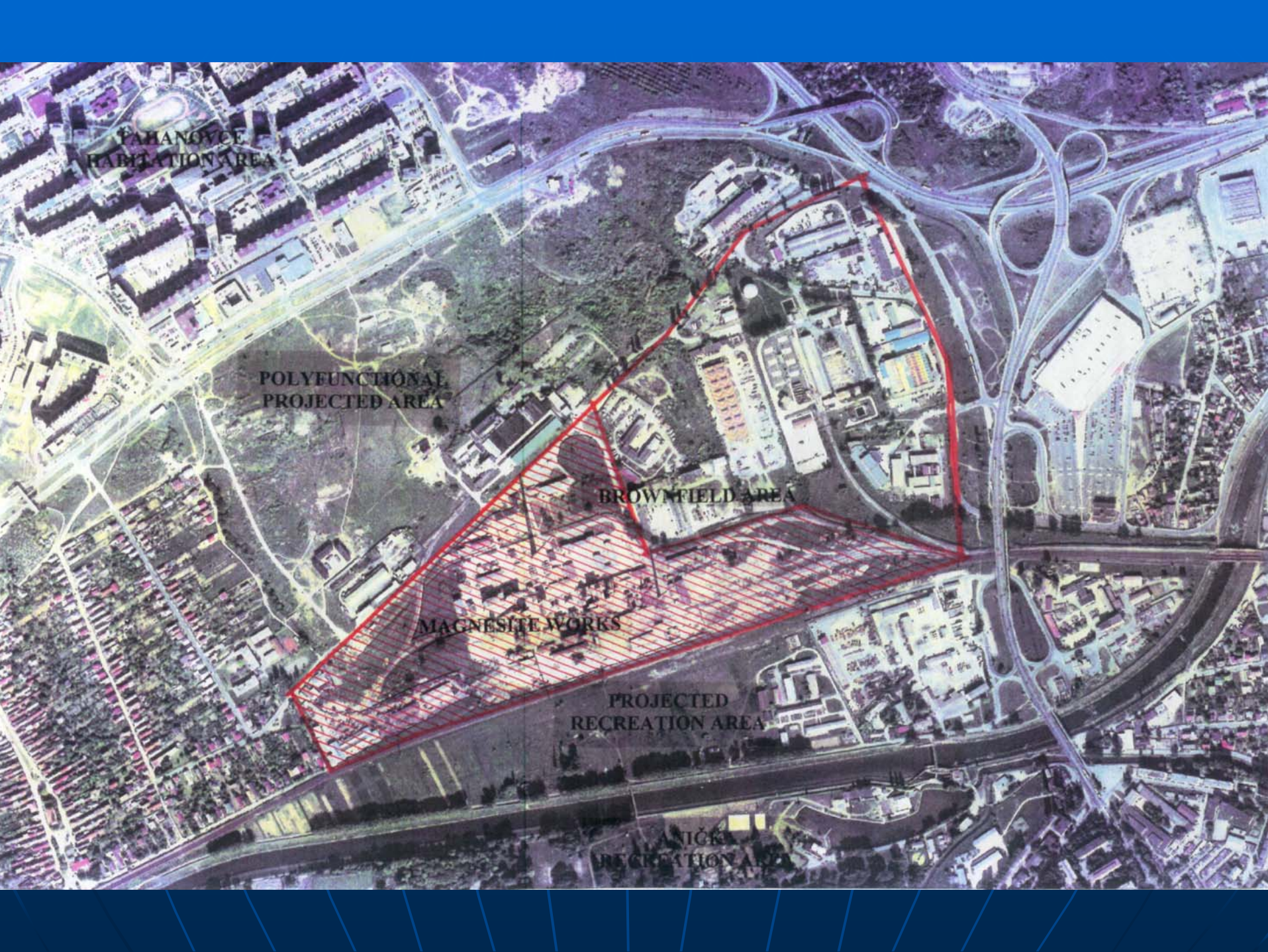
11 % unemployment rate

22 independent districts



# K O Š I C E - B R O W N F I E L D S





PAHANOVIC  
HABITATION AREA

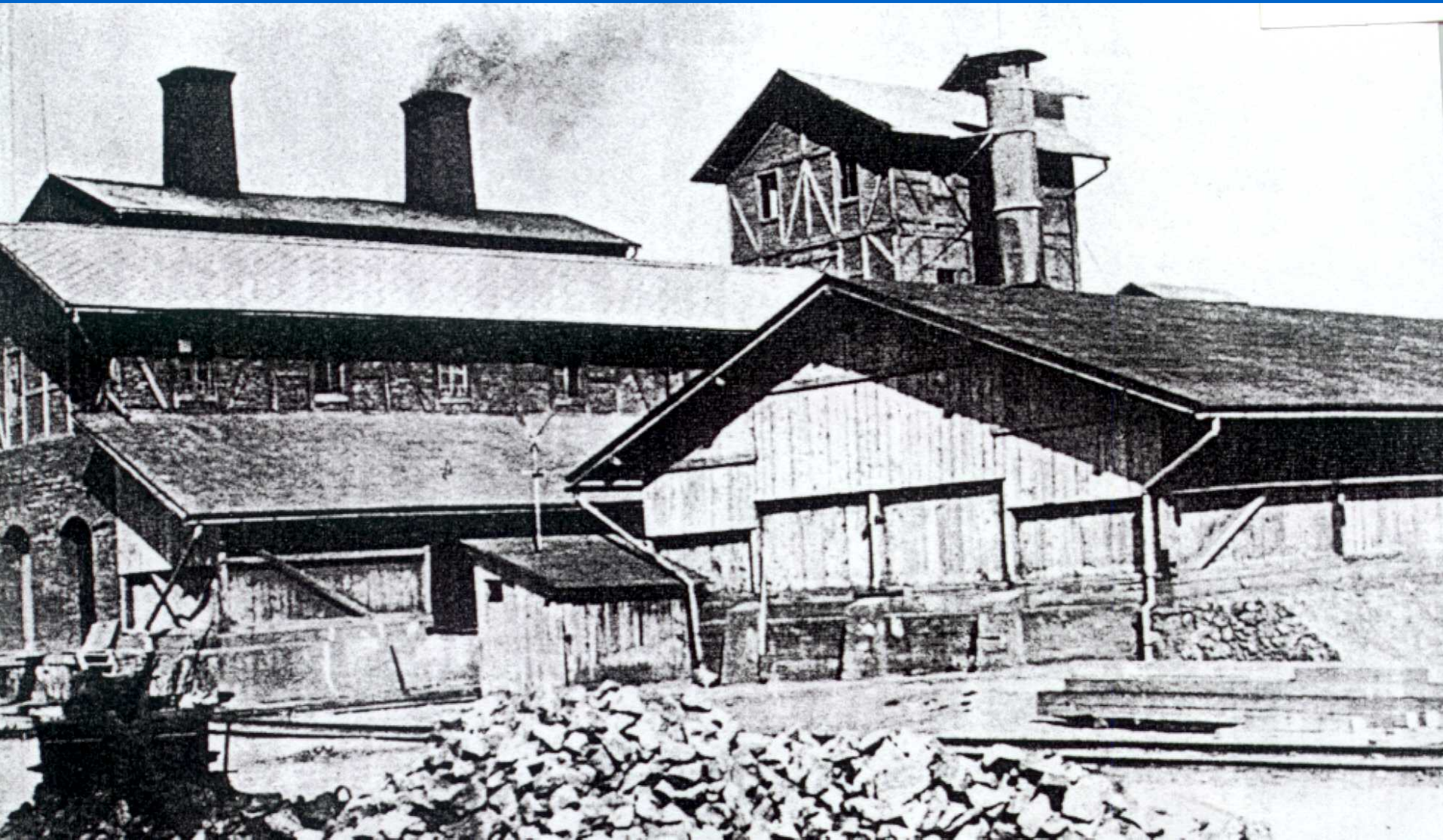
POLYFUNCTIONAL  
PROJECTED AREA

BROWNFIELD AREA

MAGNESITE WORKS

PROJECTED  
RECREATION AREA

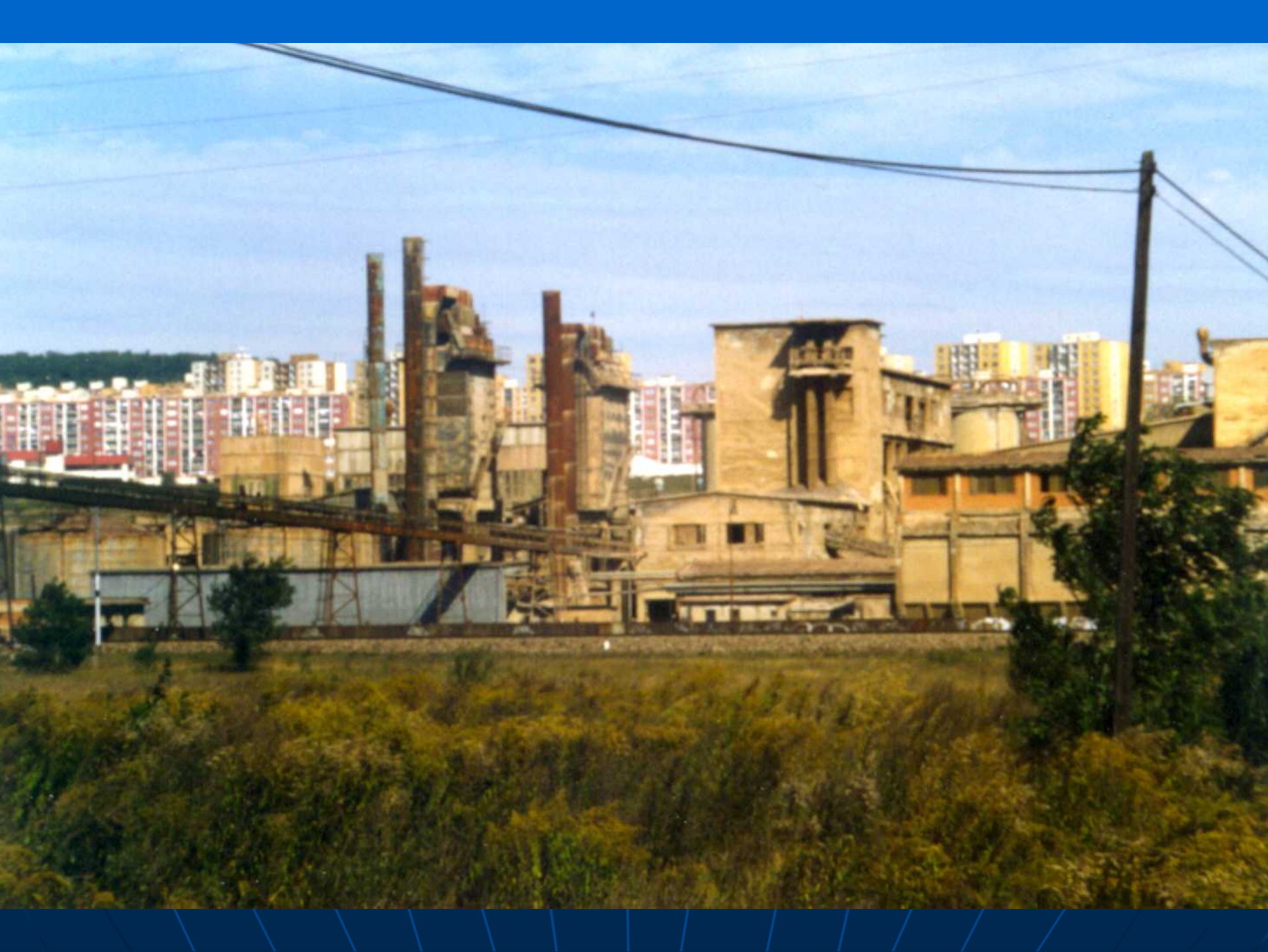
NICK  
RECREATION AREA













# What is Integrated Approach?

**Initiative** – must be based on **partnership**

- 1. Participation of citizens
- 2. Public partnership
- 3. Public-Private partnership

**Multidisciplinary team:**

- Clearly defined multidisciplinary team is necessary for project credibility and can help its implementation

# How use Integrated Approach?

- 1. Evaluation of existing state
- 2. Analysis of requirements
- 3. Analysis of possibilities
- 4. Definition and negotiation of aims to be achieved and various possible scenarios
- 5. Evaluation of impact
- 6. Action Plan
- 7. Evaluation

# Sustainable Communities (Bristol Accord)

Definition:

Sustainable community is a place where people want to live now and in future

- (1) ACTIVE, INCLUSIVE AND SAFE
- (2) WELL RUN
- (3) WELL CONNECTED
- (4) WELL SERVICED
- (5) ENVIRONMENT FRIENDLY
- (6) PROSPEROUS
- (7) WELL DESIGNED AND BUILT
- (8) FAIR FOR EVERYONE

Thank you for your attention