

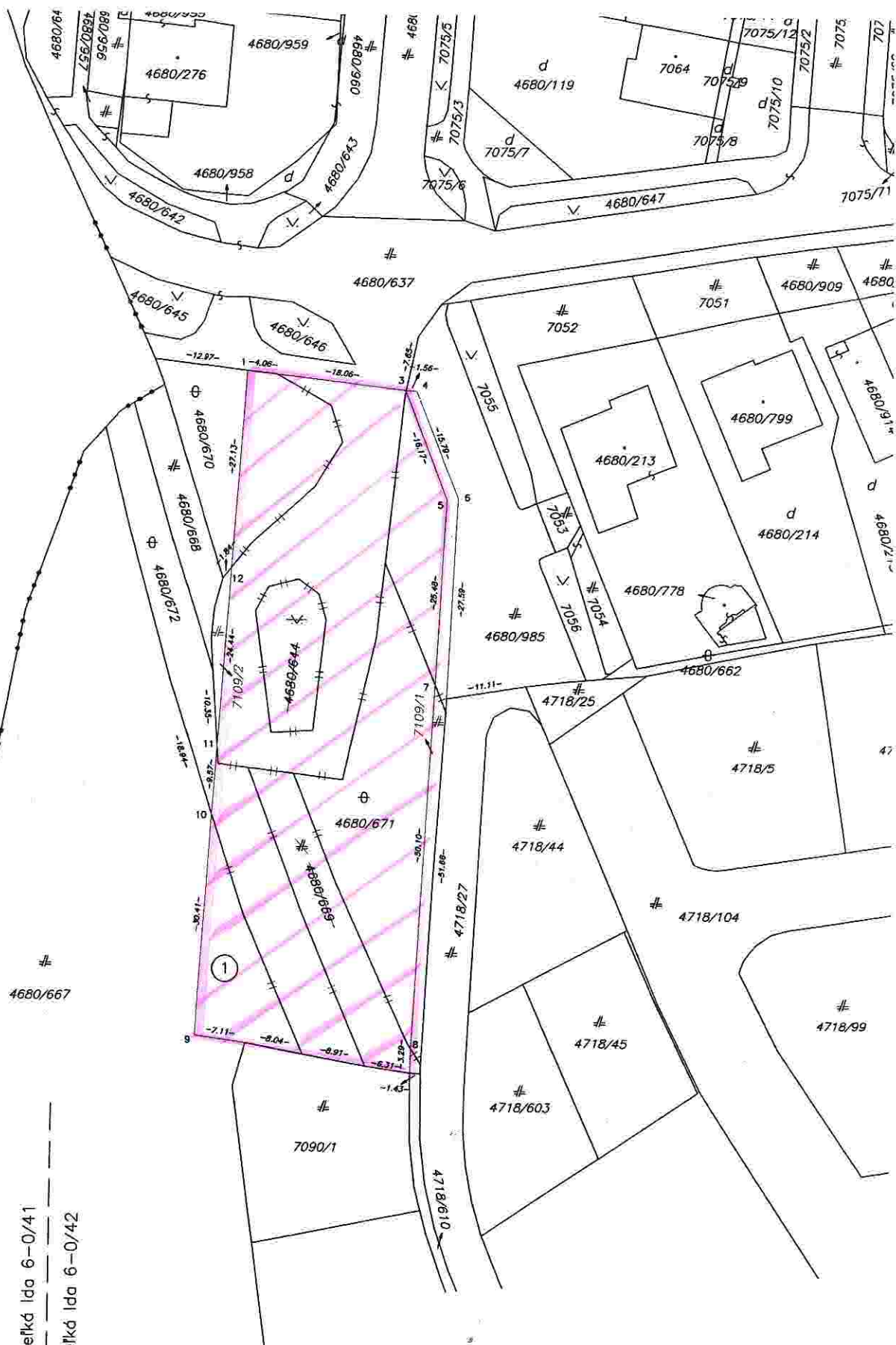
VLASTNÍK POZEMKOV MĚSTO KOŠICE PAR.Č. 4680/671 S VÝMĚROU

2 676 m²

obec: Košice - M.Č. Myslava, k.ú.: Myslava
obec: Košice - M.Č. Západ, k.ú.: Terasa

Velká Ida 6-0/41

Velká Ida 6-0/42



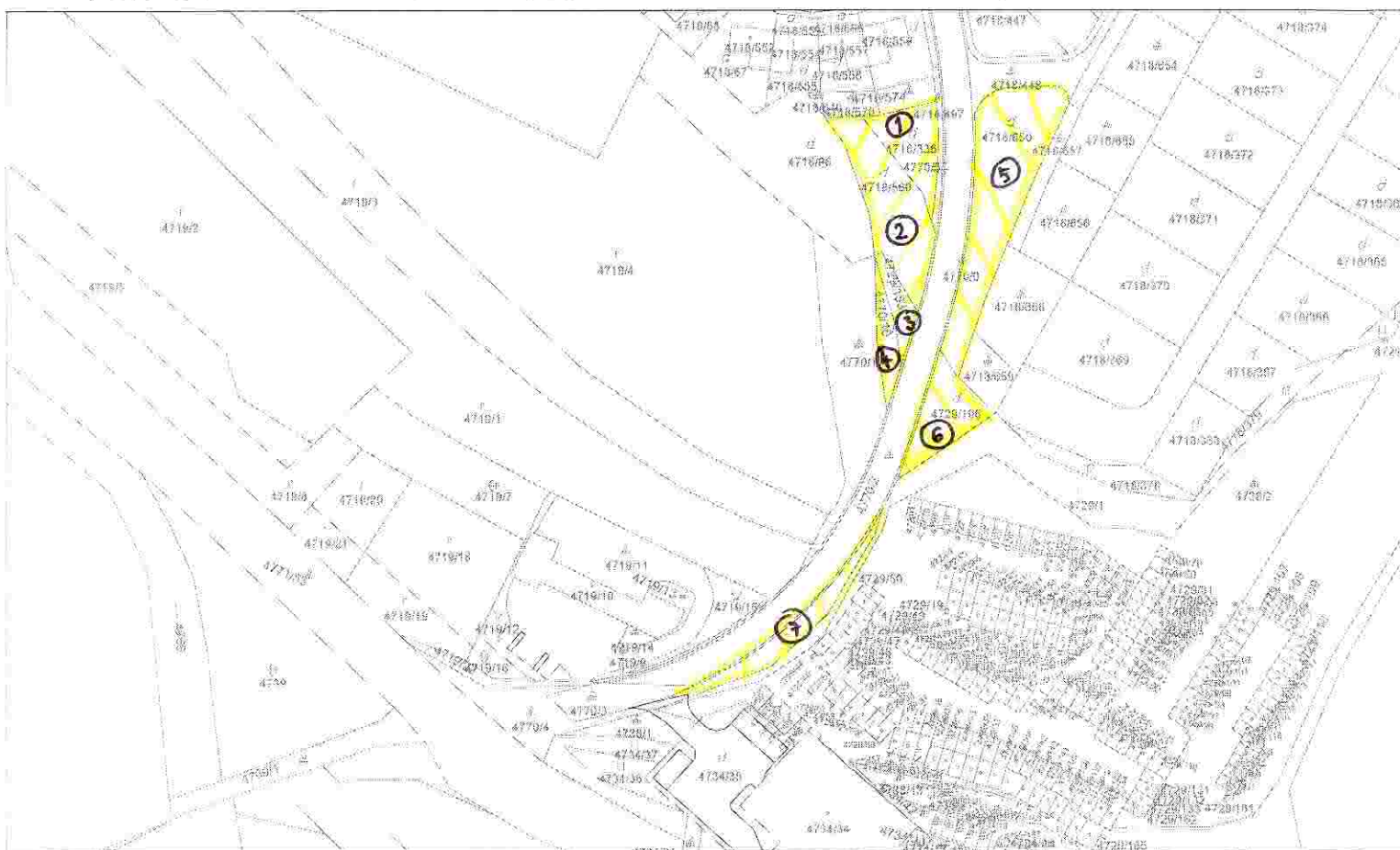
Informatívna kópia z mapy

Vytvorené cez katastrálny portál

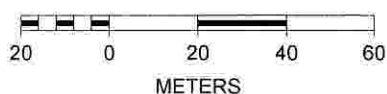
Okres: Košice II
Obec: KOŠICE - ZÁPAD
Katastrálne územie: Terasa

12. marca 2014 13:39

VLASTNÍK POZEMKOV J. F. INVEST S. R. O.



SCALE 1 : 1 729



- ① p.č. 4718 / 336
- ② p.č. 4718 / 560
- ③ p.č. 4729 / 183
- ④ p.č. 4770 / 10
- ⑤ p.č. 4718 / 650
- ⑥ p.č. 4729 / 196
- ⑦ p.č. 6375

VÝMERA SPOLU 2482 m²

VO VLASTNÍCTVE J. F. INVEST S.R.O.

The map displays a complex arrangement of land parcels, many of which are numbered with a combination of a base number and a fraction (e.g., 4718/2, 4718/362, 4719/18). Two specific parcels are highlighted in yellow and labeled with their identification numbers and areas:

- Parc. č. 4770/5** (103 m²)
- Parc. č. 4770/6** (32 m²)

The map also shows several streets, including 'POPRADSKÁ UL.' and 'PO MUNTICHOVCE'. A yellow dashed line runs through the highlighted parcels, possibly indicating a boundary or a proposed path. The overall layout shows a dense residential or commercial area with many small, irregularly shaped plots.



Handwritten signature or mark.



Barry

