

763/201

1624/721

3763/186

3763/218

3763/185  
3763/188  
3763/136  
3763/137  
3763/138  
3763/139

3763/187

3763/190

3763/191

3763/192

3763/193

3763/194

3763/195

3763/196

3763/197

3763/198

3763/199

3763/200

3763/201

3763/202

3763/203

3763/204

3763/205

3763/206

3763/207

3763/208

3763/209

3763/210

3763/211

3763/212

3763/213

3763/214

3763/215

3763/216

3763/217

3763/218

3763/219

3763/220

3763/221

3763/222

3763/223

3763/224

3763/225

3763/226

3763/227

3763/228

3763/229

3763/230

3763/231

3763/232

3763/233

3763/234

3763/235

3763/236

3763/237

3763/238

3763/239

3763/240

3763/241

3763/242

3763/243

3763/244

3763/245

3763/246

3763/247

3763/248

3763/249

3763/250

3763/251

3763/252

3763/253

3763/254

3763/255

3763/256

3763/257

3763/258

3763/259

3763/260

3763/261

3763/262

3763/263

3763/264

3763/265

3763/266

3763/267

3763/268

3763/269

3763/270

3763/271

3763/272

3763/273

3763/274

3763/275

3763/276

3763/277

3763/278

3763/279

3763/280

3763/281

3763/282

3763/283

3763/284

3763/285

3763/286

3763/287

3763/288

3763/289

3763/290

3763/291

3763/292

3763/293

3763/294

3763/295

3763/296

3763/297

3763/298

3763/299

3763/300

3763/301

3763/302

3763/303

3763/304

3763/305

3763/306

3763/307

3763/308

3763/309

3763/310

3763/311

3763/312

3763/313

3763/314

3763/315

3763/316

3763/317

3763/318

3763/319

3763/320

3763/321

3763/322

3763/323

3763/324

3763/325

3763/326

3763/327

3763/328

3763/329

3763/330

3763/331

3763/332

3763/333

3763/334

3763/335

3763/336

3763/337

3763/338

3763/339

3763/340

3763/341

3763/342

3763/343

3763/344

3763/345

3763/346

3763/347

3763/348

3763/349

3763/350

3763/351

3763/352

3763/353

3763/354

3763/355

3763/356

3763/357

3763/358

3763/359

3763/360

3763/361

3763/362

3763/363

3763/364

3763/365

3763/366

3763/367

3763/368

3763/369

3763/370

3763/371

3763/372

3763/373

3763/374

3763/375

3763/376

3763/377

3763/378

3763/379

3763/380

3763/381

3763/382

3763/383

3763/384

3763/385

3763/386

3763/387

3763/388

3763/389

3763/390

3763/391

3763/392

3763/393

3763/394

3763/395

3763/396

3763/397

3763/398

3763/399

3763/400

3763/401

3763/402

3763/403

3763/404

3763/405

3763/406

3763/407

3763/408

3763/409

3763/410

3763/411

3763/412

3763/413

3763/414

3763/415

3763/416

3763/417

3763/418

3763/419

3763/420

3763/421

3763/422

3763/423

3763/424

3763/425

3763/426

3763/427

3763/428

3763/429

3763/430

3763/431

3763/432

3763/433

3763/434

3763/435

3763/436

3763/437

3763/438

3763/439

3763/440

3763/441

3763/442

3763/443

3763/444

3763/445

3763/446

3763/447

3763/448

3763/449

3763/450

3763/451

3763/452

3763/453

3763/454

3763/455

3763/456

3763/457

3763/458

3763/459

3763/460

3763/461

3763/462

3763/463

3763/464

3763/465

3763/466

3763/467

3763/468

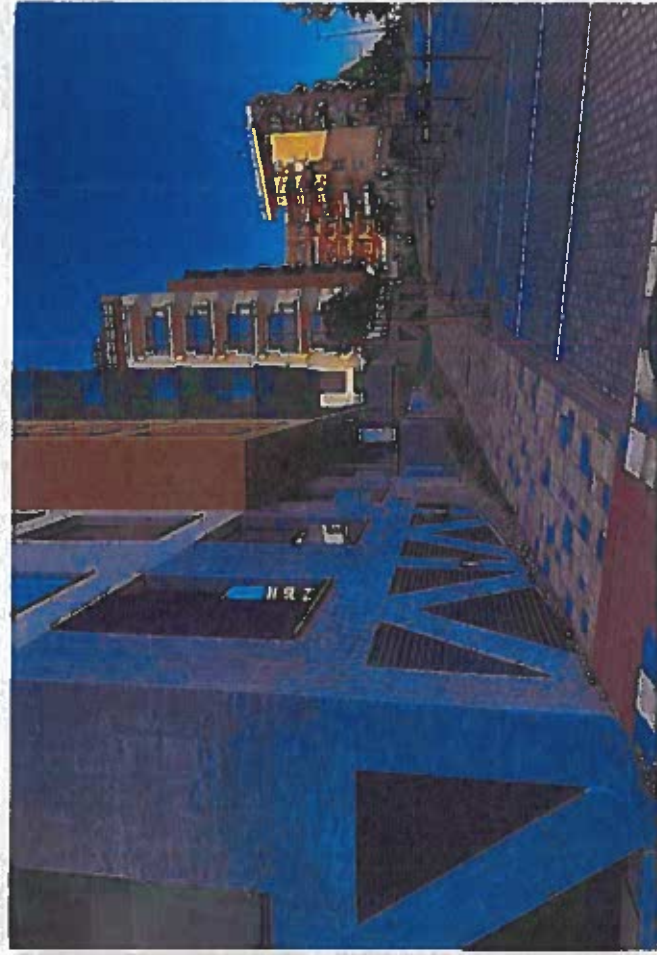
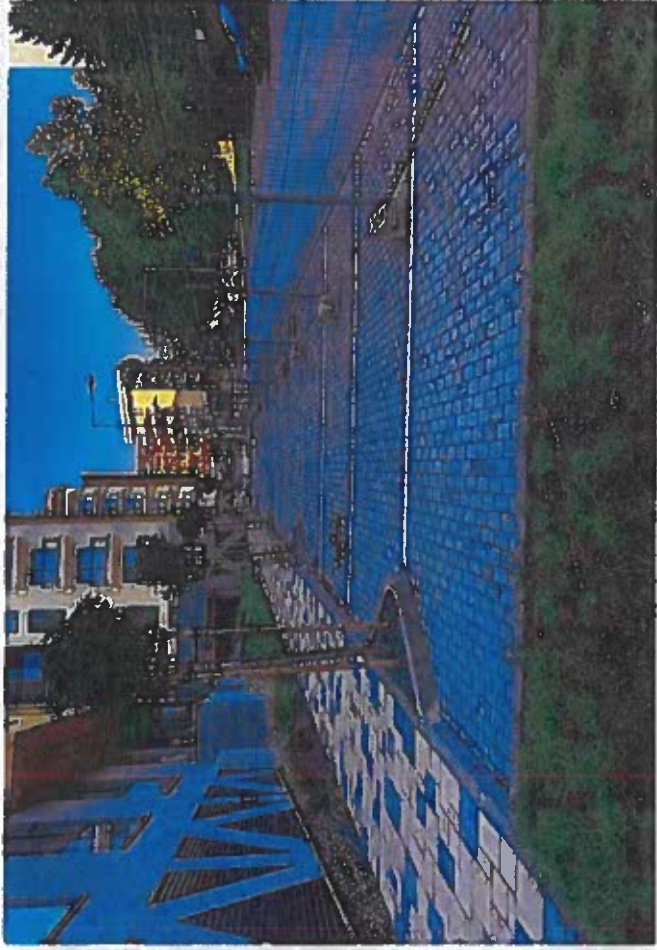
3763/469

3763/470

3763/471

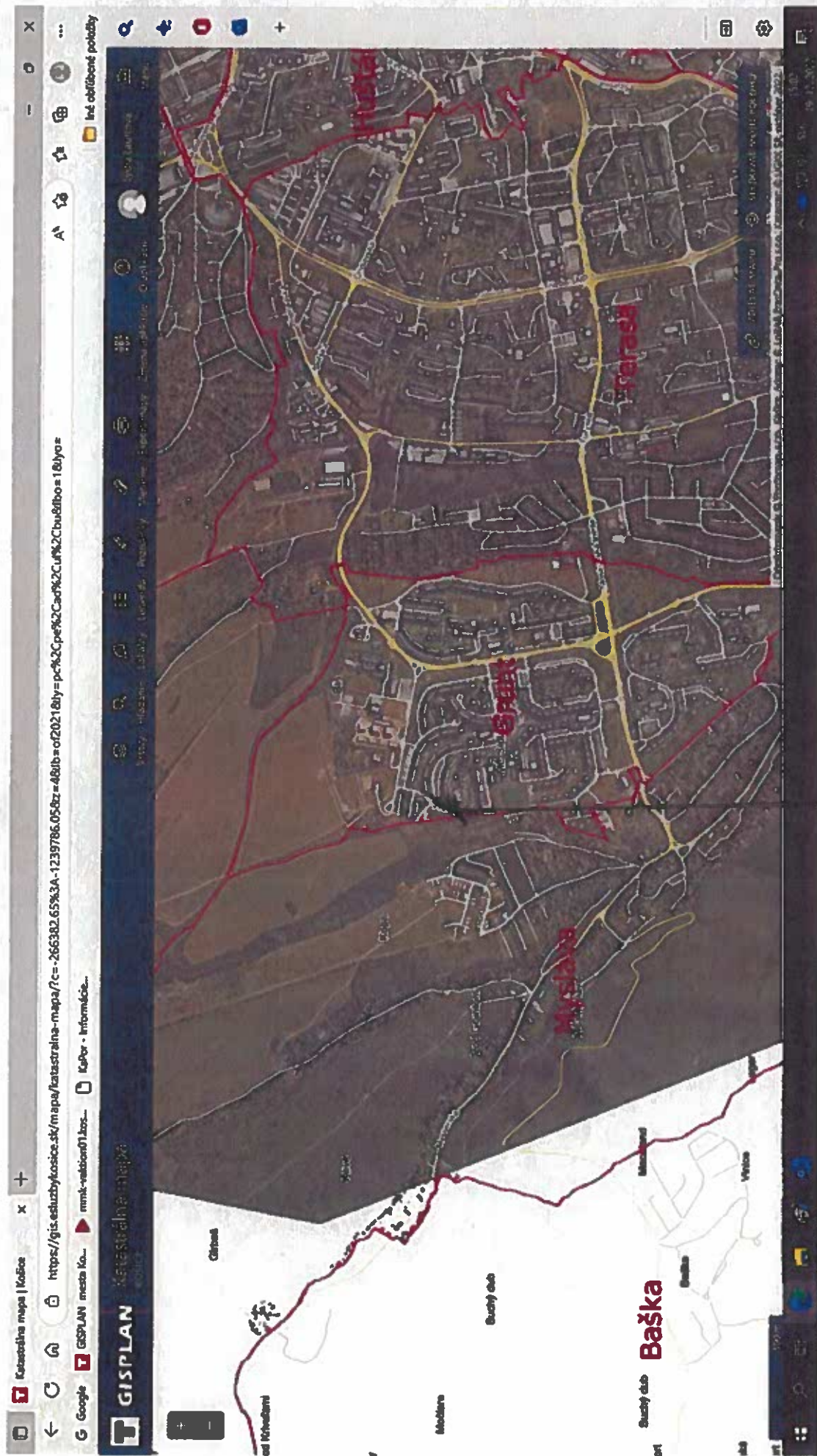
3763/472





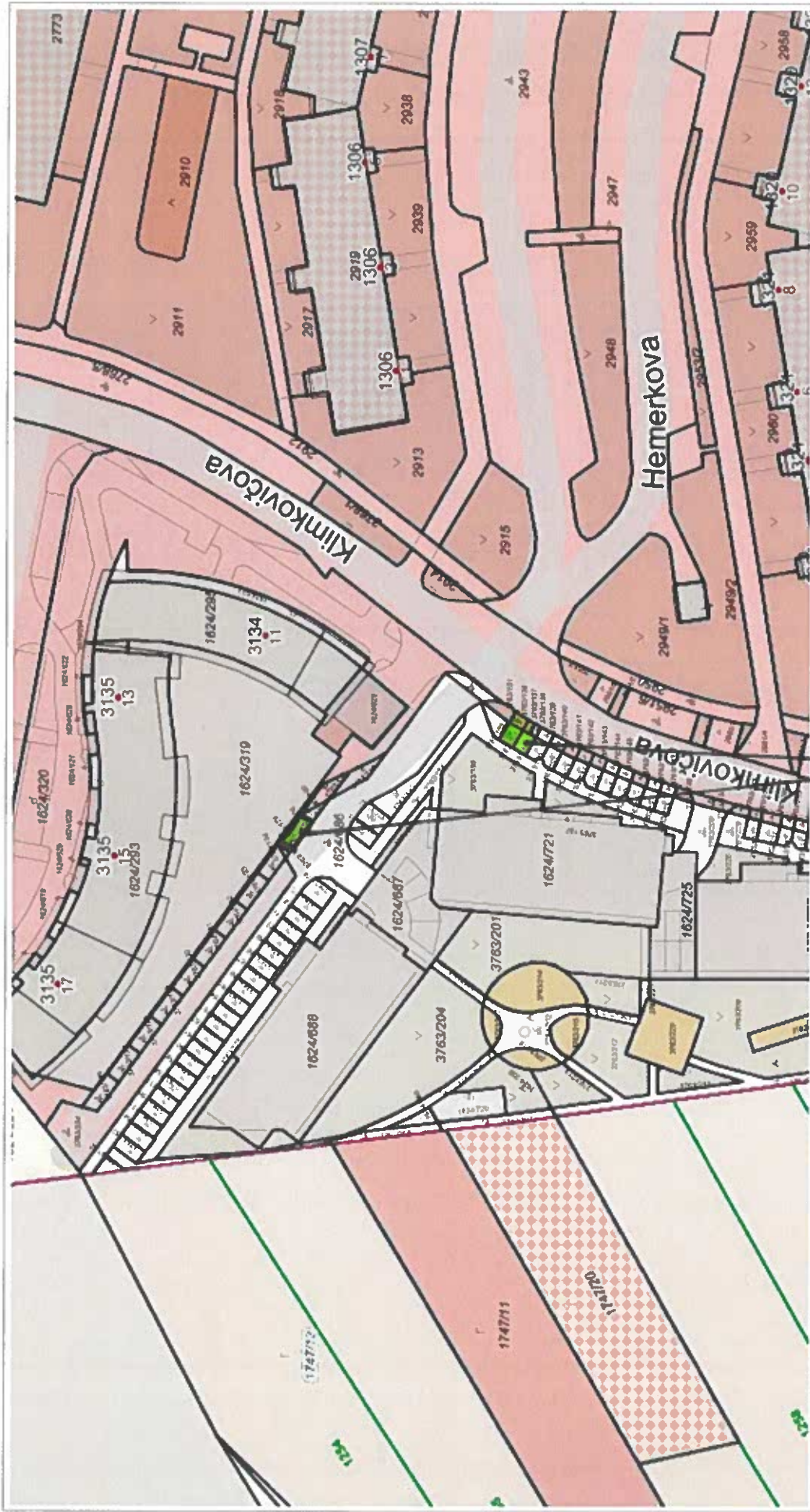
pozemky pod časťou parkovísk miest na predĺženie mostu Konec





predmet pre rodu





1 : 944

*Suma  
za cenu  
stavby aj  
3 poschodí  
s parkovom  
miestami  
p.e. 3763/148,  
c. 3763/148,  
c. 3763/148*

© Spinbox T-MAPY, Kataster: © ÚGKK SR, september 2024, Adresa: Bratislava, Bratislava